

## NOTICES TO LAW ENFORCEMENT AUTHORITIES:

Our HEMP CBD Flower is in compliance with the Agricultural Act of 2014, 7 U.S.C. §5940 (2014 Farm Bill), pursuant to pilot programs lawfully established under 7 U.S.C. §5940 in conformance with California Food and Agricultural Code, Division 24, §81001, et seq., and Nevada Revised Statutes §557.010, et seq. California's and Nevada's respective Departments of Agriculture have certified, registered, and regulated the growing of our industrial hemp in conformance with federal and state laws, rules, and regulations. Federal law, in particular, 7 U.S.C. §5940(b)(1), entitled "Legitimacy of Industrial Hemp Research," encourages growing, cultivating, and marketing industrial hemp products pursuant to these pilot programs, and by the rights and protections thereby established, Natural Life proudly offers this legal industrial hemp high in cannabidiol (CBD) in the United States.

According to 7 U.S.C. §5940, the term "Industrial Hemp" means the plant Cannabis Sativa L. and any part of such plant, whether growing or not, with a Delta-9 tetrahydrocannabinol (Delta-9 THC) concentration of not more than 0.3% on a dry weight basis. Only the Delta-9 THC level is relevant, THC-A. As shown by the Certificate of Analysis (available upon request), this hemp flower has a Delta-0 THC level on a dry weight basis equal to 0%, well below the 0.3% maximum level and, therefore, this flower is hemp, not marijuana, and is perfectly legal to possess and sell. This right applies in any state pursuant to the Full Faith and Credit Clause, Article VI, Section 1 of the constitution, and the Equal Protection Clause, Section 1 of the Fourteenth Amendment.

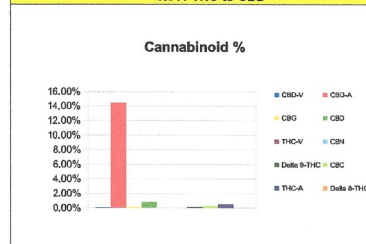


DESERT VALLEY TESTING  
2512 E Magnolia Street  
Phoenix, Arizona 85034  
480-788-6644  
www.desertvalleytesting.com

Sample Information		
Sample Identification	JGO Organic Hemp Parlette	
Laboratory Number	2018008882 DUP	
Batch Number	NA	
Matrix	Flower	
Analyzed Date	07/03/18	
Extraction Date	07/03/18	

Cannabinoid (HPLC)	%	mg/g
CBD-V	0.02%	0.25
CBD-A	14.42%	144.25
CBG	0.12%	1.18
CBD	0.82%	8.23
THC-V	0.00%	0.00
CBN	0.00%	0.00
Delta 9-THC	0.11%	1.10
CBC	0.24%	2.39
THC-A	0.46%	4.63
Delta 8-THC	0.00%	0.00
<b>Cannabinoids Total</b>		
Max Active THC	0.52%	5.17
Max Active CBD	13.52%	135.16
T. Active Cannabinoids	1.31%	13.14
Total Cannabinoids	16.20%	162.01

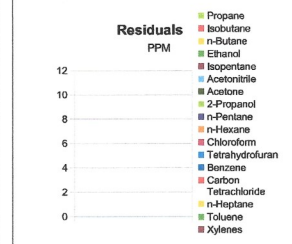
Max Active Ratios	
26.1:1 CBD to THC	
0.0:1 THC to CBD	



Sample Image	
Micro Visual:	NOT TESTED
Percent Moisture	Not Tested



RS (GCMS-MS)	PPM	RL
Propane	NT	5.0
Isobutane	NT	5.0
n-Butane	NT	5.0
Ethanol	NT	5.0
Isopentane	NT	5.0
Acetonitrile	NT	5.0
Acetone	NT	50.0
2-Propanol	NT	5.0
n-Pentane	NT	5.0
n-Hexane	NT	5.0
Chloroform	NT	5.0
Tetrahydrofuran	NT	5.0
Benzene	NT	5.0
Carbon Tetrachloride	NT	5.0
n-Heptane	NT	5.0
Toluene	NT	5.0
Xylenes	NT	10.0



g/medible	
NA	
mg THC/medible	
NA	
mg CBD/medible	
NA	
(mg) total cannabinoids/medible	
NA	

Metals	PPM	RL
Lead	NT	0.010
Arsenic	NT	0.010
Cadmium	NT	0.010
Mercury	NT	0.001



RL=Reporting Limit  
NA=Not Applicable  
NT=Not Tested

Terpene (GC-MS)	%	mg/g
<b>Compound</b>		
alpha-Pinene	0.02%	0.15
Camphene	0.00%	0.00
Sabinene	0.00%	0.00
beta-Myrcene	0.12%	1.20
Beta-Pinene	0.00%	0.00
p-mentha-1-5-diene	0.00%	0.00
(1S)-(+)-3-Carene	0.00%	0.00
Alpha-Terpinene	0.00%	0.00
Ocimene Isomer 1	0.00%	0.00
(R)-(+)-Limonene	0.02%	0.21
Ocimene Isomer 2	0.01%	0.12
Eucalyptol (1,8-Cineole)	0.00%	0.00
gamma-Terpinene	0.00%	0.00
Sabinene Hydrate	0.00%	0.00
Terpinolene	0.00%	0.00
Linalool	0.00%	0.00
(+)-Fenchone and L(-)-Fenchone	0.00%	0.00
(1R)-Endo-(+)-Fenchyl	0.01%	0.10
(-)-Isopulegol	0.00%	0.00
Camphor	0.00%	0.00
Isoborneol	0.00%	0.00
Hexahydrothymol	0.00%	0.00
(+)-Borneol and (-) Borneol	0.00%	0.00
alpha-Terpineol	0.00%	0.00
gamma-Terpineol	0.00%	0.00
Menthol	0.00%	0.00
Geraniol	0.00%	0.00
(+)-Pulegone	0.00%	0.00
Geranyl Acetate	0.00%	0.00
alpha-Cedrene	0.02%	0.18
trans-Caryophyllene	0.13%	1.29
alpha-Humulene	0.04%	0.43
Valencene	0.00%	0.00
cis-Nerolidol	0.00%	0.00
trans-Nerolidol	0.00%	0.00
Guaiol	0.00%	0.00
(-)-Caryophyllene Oxide	0.03%	0.26
(+)-Cedrol	0.00%	0.00
(-)-alpha-Bisabolol	0.02%	0.21
<b>Total Terpenes</b>	<b>0.42%</b>	<b>4.15</b>

