

STRAIN NAME: N/A
Matrix: Feline 250

Blue Moon Hemp
3100 NW 2nd Ave, Boca Raton,
FL 33431



SAMPLE: D803030-11

Harvest/Lot ID: 18636

Batch#: 18636; Batch Size: N/A Ordered:
03/22/2018; Sampled: N/A Completed:
03/26/2018; Expires: 03/26/2019

Sampling Method: Client Method



- Pesticides - NT
- Microbials - NT
- Mycotoxins - NT
- Heavy Metals - NT
- Terpenes - NT
- Residual Solvents - NT
- Filth - NT
- Water Activity - NT
- Moisture - NT

Cannabinoids

Analyte	Weight (%)	mg/g	RPD%
THCa	<LOQ	<LOQ	
D9-THC	<LOQ	<LOQ	
D8-THC	<LOQ	<LOQ	
THCV	<LOQ	<LOQ	
THCVa	<LOQ	<LOQ	
TOTAL THC	<LOQ	<LOQ	
CBDa	<LOQ	<LOQ	
CBD	1.14	11.43	
CBDV	<LOQ	<LOQ	
CBDVa	<LOQ	<LOQ	
TOTAL CBD	1.14	11.43	
CBN	<LOQ	<LOQ	
CBG	<LOQ	<LOQ	
CBC	<LOQ	<LOQ	
TOTAL CANNABINOIDS	1.14	11.43	

Cannabinoids

0.0%

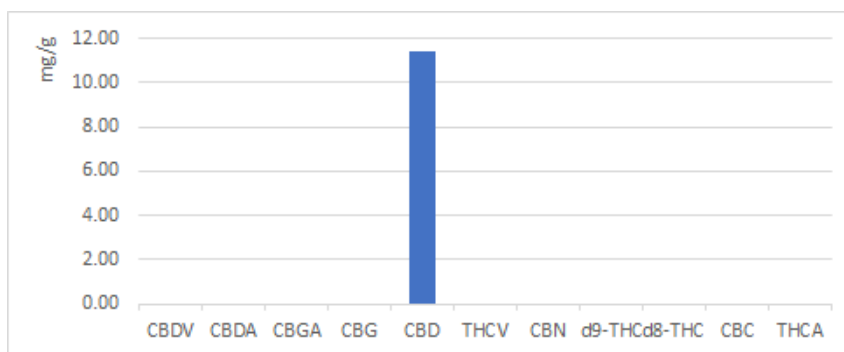
Total THC

1.14%

Total CBD

Total THC= THCa x 0.877 + d9-THC

Total CBD= CBDa x 0.877 + CBD





STRAIN NAME: N/A
Matrix: Feline 250

SAMPLE: D803030-11

Harvest/Lot ID: 18636

Batch#: 18636; Batch Size: N/A Ordered:
03/22/2018; Sampled: N/A Completed:
03/26/2018; Expires: 03/26/2019

Sampling Method: Client Method

Blue Moon Hemp
3100 NW 2nd Ave, Boca Raton,
FL 33431



Cannabinoid Profile Test Results - Analysis Method: SOP.T.30.050, SOP.T.40.020

Full spectrum cannabinoid analysis utilizing High Performance Liquid Chromatography with UV detection (HPLC-UV). (Method: SOP.T.30.050 for sample prep and Shimadzu High Sensitivity Method SOP.T.40.020 for analysis. LOQ for all cannabinoids is 1 mg/L). D9-THC, THCA, CBD, CBDA are State accredited analytes, the rest are "info only."

